

**EICHLER
HOMES** —

WITH BREATHTAKING VIEWS IN

THE HIGHLANDS • San Mateo



3 and 4 bedrooms • 2 baths • all-purpose room • 2-car garage

no finer setting!

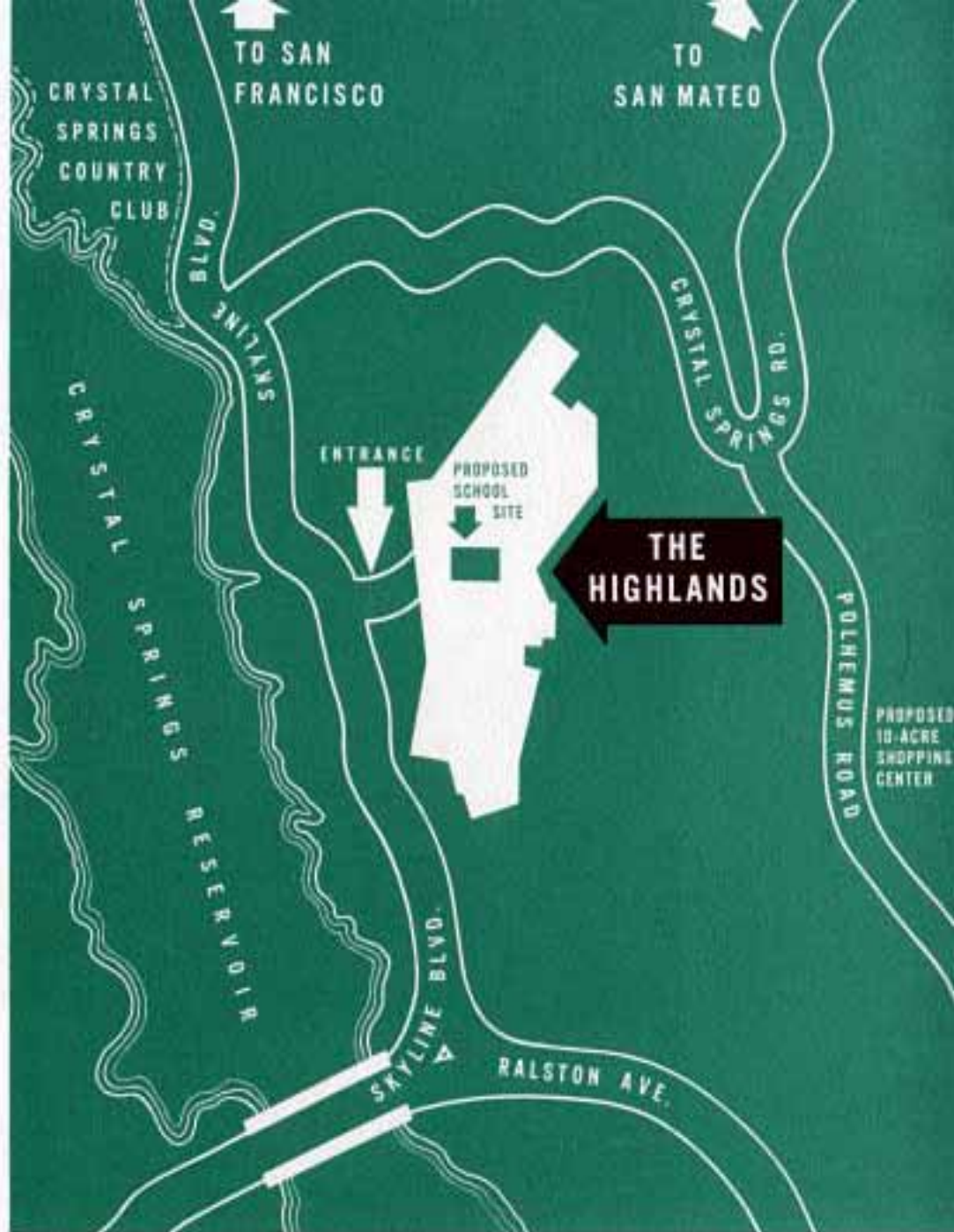
Stretching across the ridge of the beautiful San Mateo hills, The Highlands commands spectacular vistas of the sparkling blue Crystal Springs Lakes on one hand—beautiful San Francisco Bay on the other. Unspoiled by man, the surrounding countryside invites every kind of outdoor recreation. And, as with all Eichler Homes developments, The Highlands has been carefully laid out to preserve and enhance the natural beauty of its surroundings.

so convenient, too!

Schools and local shopping facilities are planned for—and a short drive takes you to the fine stores and shops of San Mateo, Hillsdale and Belmont. For relaxation, the Crystal Springs and Peninsula Country Clubs, and many miles of beautiful bridle paths are near at hand. And San Francisco is just 30 minutes away, via scenic Skyline Boulevard.

the ideal combination!

In short, if you want all the delights of country living on a hillside view home—plus all the conveniences of an established community—you want an Eichler Home in The Highlands.





famous-name quality appointments!

Some of the most respected names in American industry are represented in the components of an Eichler Home. Armstrong cork floors cover the living area. Window walls of Pittsburgh crystal glass include Arcadia sliding glass doors, the finest made, while the fully-screened and weather-stripped sliding windows are by Rusco. Kitchen and snack bar counters are covered with genuine Formica, heat and scratch resistant and easy to clean. Sliding garage doors are mounted on Stanley hardware, and the A. O. Smith water heater is Permaglas lined, guaranteed for ten years. Interior and exterior are finished with Samuel Cabot Stains and General Paints. From the Sargent lifetime brass doorknob to the rust-proof copper water pipe, every feature of your Eichler Home has been selected for outstanding quality.

enjoy custom features at no extra cost!

In these new Eichler Homes you'll find features usually reserved for custom-built homes — features that will make life so much easier and more pleasant for your whole family . . .

engineered radiant heating—provides healthful, even heat from floor to ceiling—without fumes, soot or dust.

Philippine mahogany wall paneling—its rich, beautiful grain adds charm and luxury to your home—and it's a breeze to clean.

indoor-outdoor living—window walls of glass tie light, spacious living area to sheltered terrace, your outdoor "living room".

New, Super Sized Thermador Master-piece built-in electric oven and range. Saves stooping to use oven, eliminates waste space behind or below range.

Waste King garbage disposer — eliminates all garbage quickly and quietly.

the heart of your Eichler Home is the kitchen, a miracle of well-planned convenience. Cooking is more fun in your built-in Thermador oven and range, and the overhead exhaust fan whisks away cooking odors before they start. Your grease-proof asphalt tile floor is easy to keep sparkling. Snack bar makes it easier to serve dining room, creates extra counter space. Cabinets are finished in Zolatone, a washable plastic paint, have smoothly sliding doors. There's a built-in chopping block, too.



live the California way

... in your own secluded terrace, right off the living-dining area. Every Eichler Home in The Highlands is carefully placed on its lot to give maximum privacy for outdoor living, maximum protection from prevailing winds and hot afternoon sun. The wide roof overhang controls Old Sol, too—keeps him out of the house in summer, lets in slanting rays during winter.

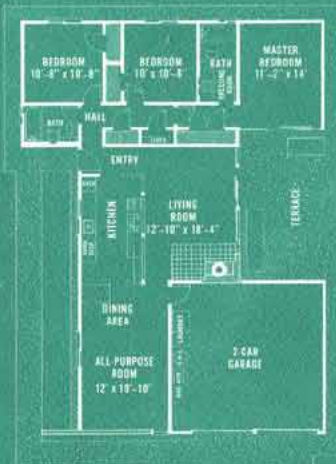
select your house, your colors now!

Enjoy the advantages of "custom" building without its annoyances and without its high cost. Visit The Highlands—and select the house you want to live in. Then, get together with the family and have the fun of picking your colors—for exterior, beams, ceiling, walls and bathroom tile. Buy now—and get the home of your choice and the lot of your choice!



EICHLER HOMES—

THE HIGHLANDS • San Mateo



SM-100

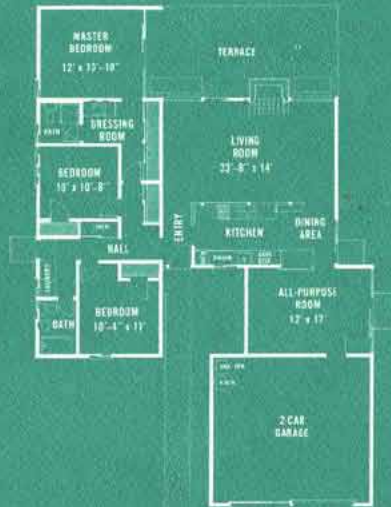
\$17,950

GI—\$500 DOWN

Monthly Payments Approximately \$121

FHA—\$3050 DOWN

Monthly Payments Approximately \$118



SM-223

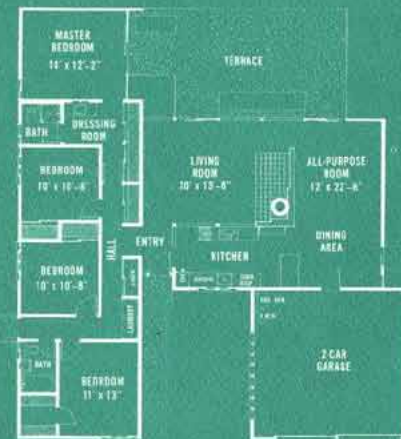
\$19,950

GI—\$800 DOWN

Monthly Payments Approximately \$130

FHA—\$3650 DOWN

Monthly Payments Approximately \$125



SM-134

\$21,950

GI—\$1950 DOWN

Monthly Payments Approximately \$138

FHA—\$4150 DOWN

Monthly Payments Approximately \$127

All Eichler Homes in The Highlands include these "custom" features:

- Built-in Thermador Range and Oven
- Waste King Garbage Disposer
- Armstrong cork floors
- Built-in Hotpoint Dishwasher
- Engineered radiant heat
- Extra large 2-car garage

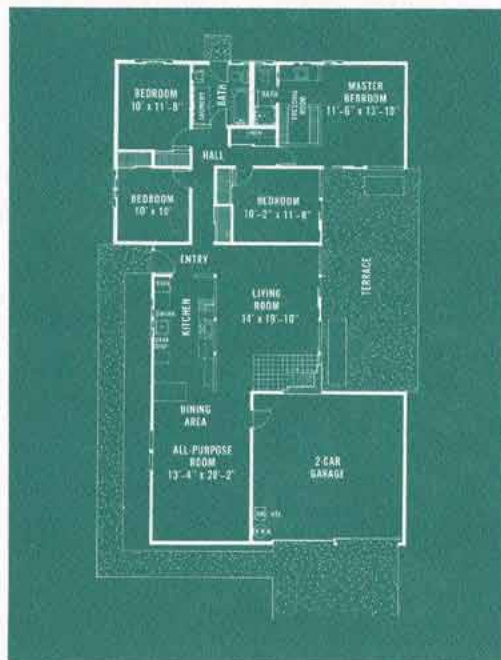
NOTE: These monthly payments INCLUDE taxes and insurance. The VA terms include Veterans' tax exemptions. The FHA terms do not include Veterans' tax exemptions.

Some houses on extra large lots \$500 extra

All down payments plus closing costs

EICHLER HOMES—

THE HIGHLANDS • San Mateo



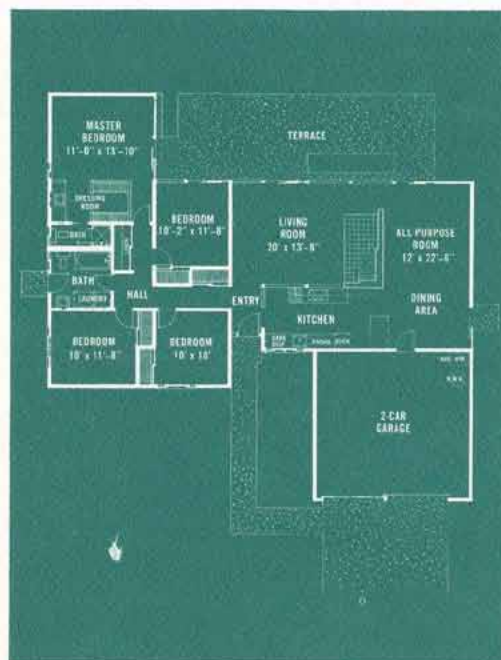
SM-104 \$19,950

GI—\$800 DOWN

Monthly Payments Approximately \$130

FHA—\$3650 DOWN

Monthly Payments Approximately \$125



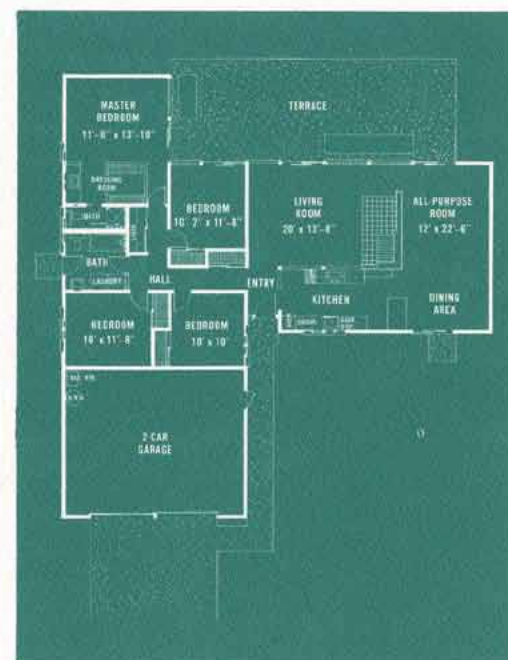
SM-124 \$20,500

GI—\$1150 DOWN

Monthly Payments Approximately \$132

FHA—\$3800 DOWN

Monthly Payments Approximately \$127



SM-114 \$20,950

GI—\$1300 DOWN

Monthly Payments Approximately \$136

FHA—\$3950 DOWN

Monthly Payments Approximately \$129

All Eichler Homes in The Highlands include these "custom" features:

- Built-in Thermador Range and Oven
- Waste King Garbage Disposer
- Armstrong cork floors
- Built-in Hotpoint Dishwasher
- Engineered radiant heat
- Extra large 2-car garage

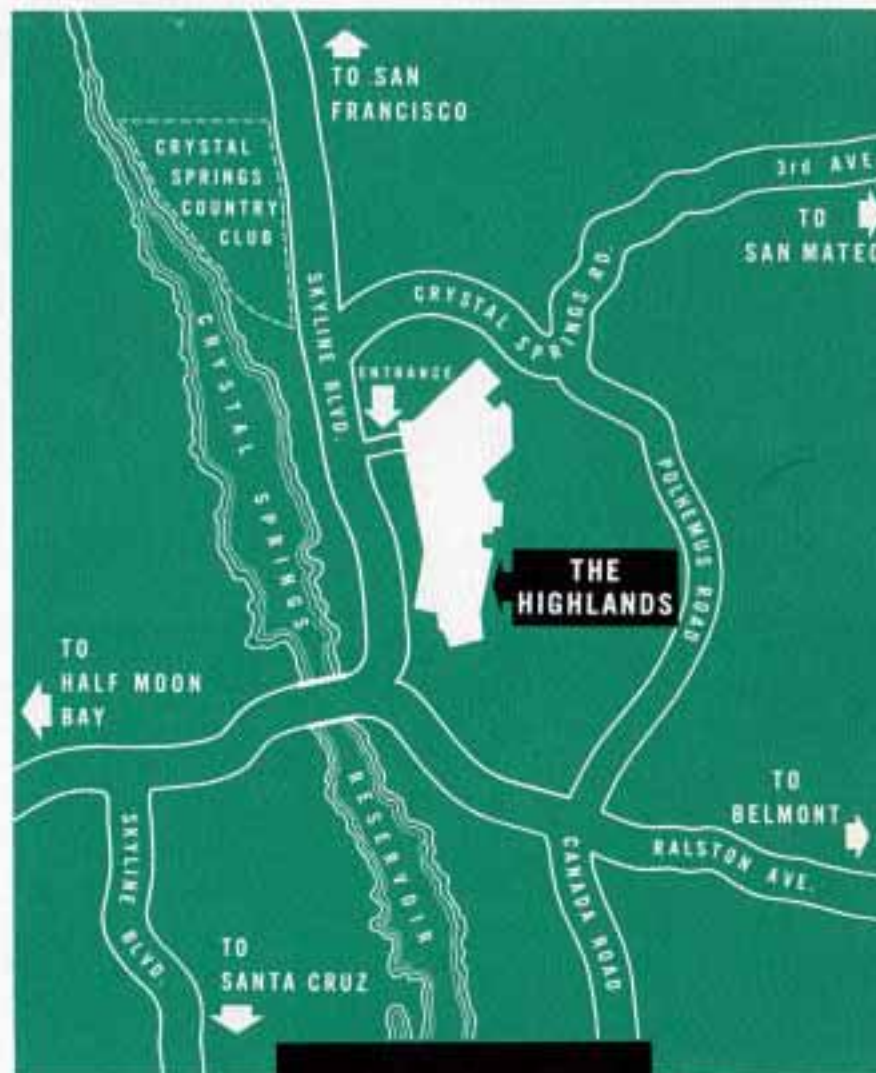
NOTE: These monthly payments INCLUDE taxes and insurance. The VA terms include Veterans' tax exemptions. The FHA terms do not include Veterans' tax exemptions.

Some houses on extra large lots \$500 extra

All down payments plus closing costs

visit Eichler Homes in The Highlands now...

From San Francisco, take Skyline Boulevard south direct to The Highlands entrance, .5 mile south of Crystal Springs Road Junction in San Mateo. OR, take Bayshore Freeway or El Camino Real south to 3rd Avenue in San Mateo, follow 3rd Avenue west to Crystal Springs Road, turn south at Skyline Boulevard to The Highlands entrance.



**EICHLER
HOMES**

2001 EL CAMINO REAL, PALO ALTO • DAvenport 3-0217