

R  
—

*designed to make your everyday a holiday!*

**THE HIGHLANDS** above Hillsborough

**EICHLE  
HOMES**

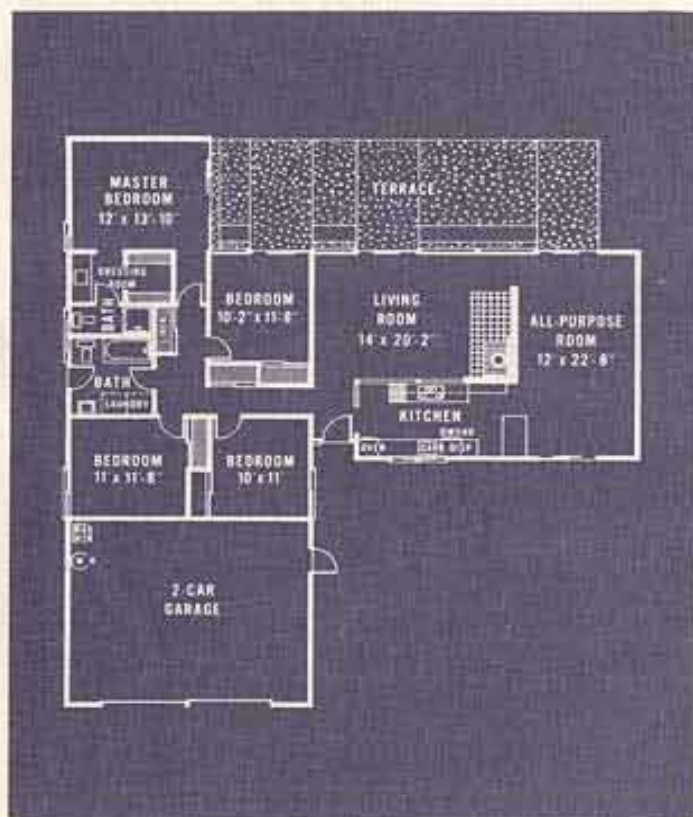


# Unique Eichler Homes Floor Plans

4 Bedrooms - All Purpose Room - 2 Baths - Oversize 2 Car Garage

All Eichler Homes shown here include these custom features:

- Built-in Thermador Range and Oven
- Waste King Garbage Disposer
- Armstrong cork and vinyl floors
- Built-in Waste King Dishwasher
- Engineered radiant heat
- Abundant storage

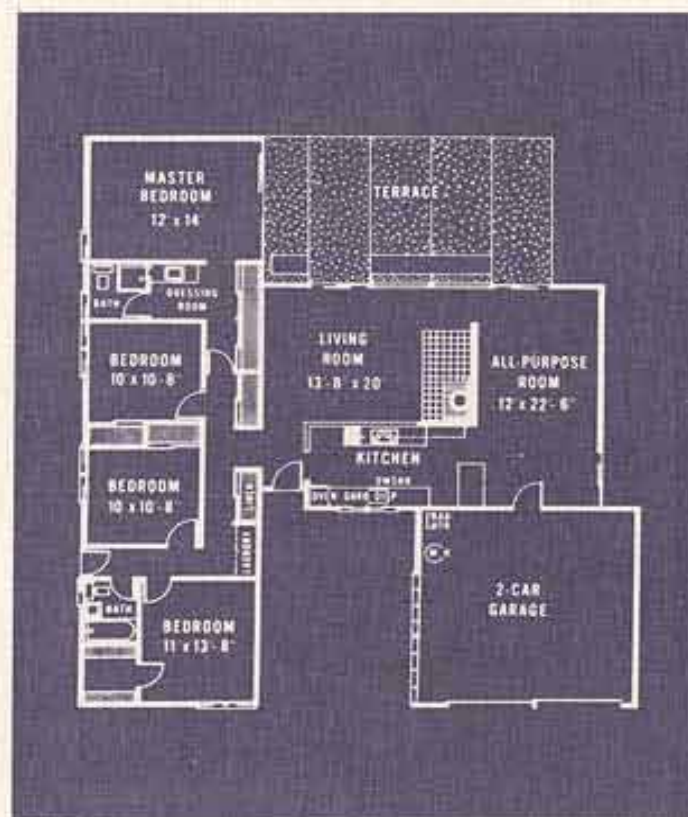


414

\$ \_\_\_\_\_

\$ \_\_\_\_\_ DOWN

Monthly Payments Approximately \$ \_\_\_\_\_

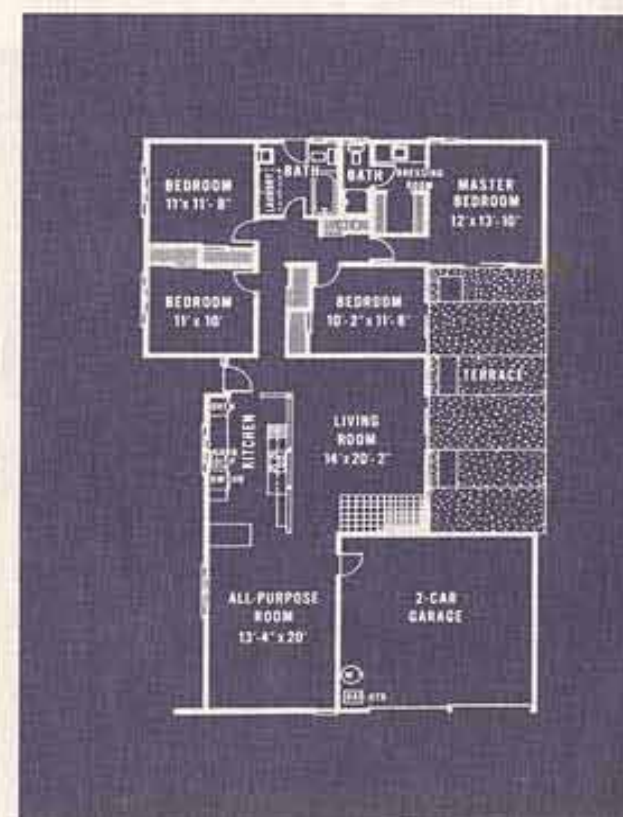


434

\$ \_\_\_\_\_

\$ \_\_\_\_\_ DOWN

Monthly Payments Approximately \$ \_\_\_\_\_



404

\$ \_\_\_\_\_

\$ \_\_\_\_\_ DOWN

Monthly Payments Approximately \$ \_\_\_\_\_

NOTE: See salesman for price and payment information. Monthly payments INCLUDE estimated taxes and insurance.

All down payments plus closing costs

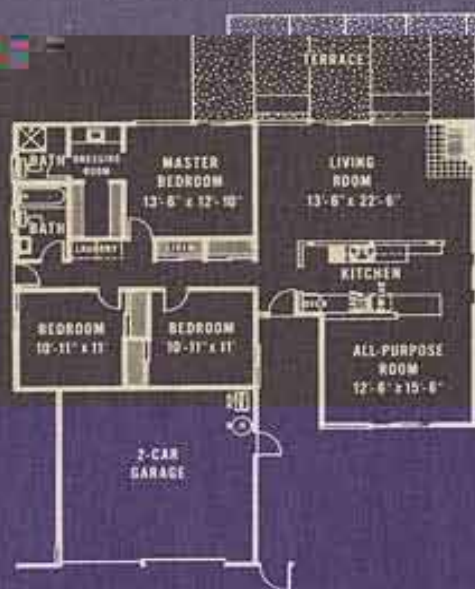


# Unique Eichler Homes Floor Plans

3 Bedrooms - All Purpose Room - 2 Baths - Oversize 2 Car Garage

All Eichler Homes shown here include these custom features:

- Built-in Thermador Range and Oven
- Waste King Garbage Disposer
- Armstrong cork and vinyl floors
- Built-in Waste King Dishwasher
- Engineered radiant heat
- Abundant storage

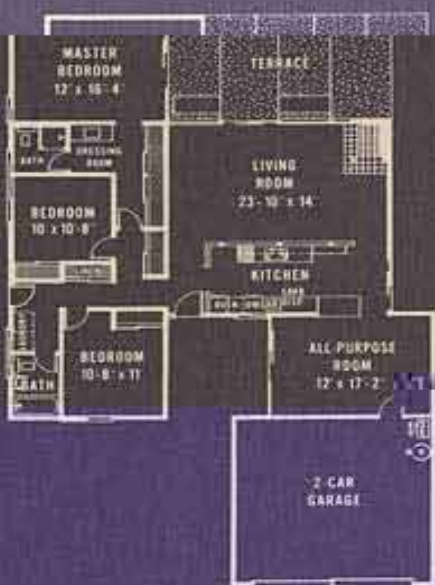


433

\$ \_\_\_\_\_

\$ \_\_\_\_\_ DOWN

Monthly Payments Approximately \$ \_\_\_\_\_

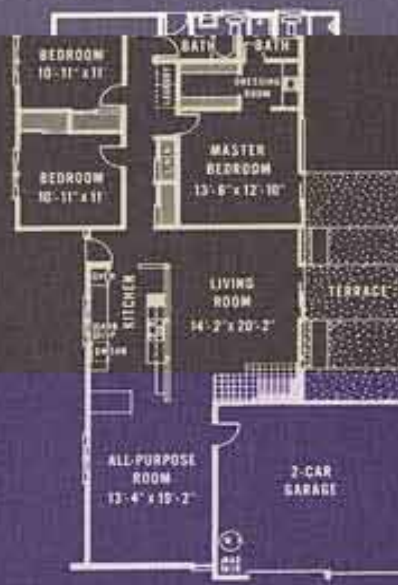


423

\$ \_\_\_\_\_

\$ \_\_\_\_\_ DOWN

Monthly Payments Approximately \$ \_\_\_\_\_



443

\$ \_\_\_\_\_

\$ \_\_\_\_\_ DOWN

Monthly Payments Approximately \$ \_\_\_\_\_

NOTE: See salesman for price and payment information. Monthly payments INCLUDE estimated taxes and insurance.

All down payments plus closing costs

EICHLER HOMES OFFICE 2001 EL CAMINO REAL,  
PALO ALTO, DAVENPORT 3-0217  
HIGHLANDS MODEL HOME FIRESIDE 1-1287





There is nothing quite like an Eichler Home in The Highlands! Here, in this select setting, is country living at its best... and only 30 minutes from San Francisco.

To the north and the west, The Highlands overlooks sparkling Crystal Springs Lakes...to the south and the east, magnificent mountains and San Francisco Bay.

The Highlands' vista is permanently protected, too. Located on a plateau, this site is bordered on three sides by water shed land - where no structures can be built - so the country location will always be as open and scenic as it is today.

Shopping is convenient as well. The large Hillsdale shopping center is nearby, and so are downtown San Mateo and Belmont. Another shopping center is to be built on Polhemus

Road - only 2 minutes from The Highlands. The new 19th Avenue freeway will provide easy access to San Francisco - lower Peninsula freeways. San Mateo via Crystal Springs Road is now 10 minutes from The Highlands; Bayshore is 13 minutes.

An elementary school site - six acres - is directly east of the main entrance road to The Highlands. Until this school is completed, a bus takes children two miles to the elementary school. Transportation is also furnished to San Mateo High School.

Crystal Springs and Peninsula Country Clubs, as well as many beautiful miles of bridal paths, are near at hand. Streets and utilities in The Highlands are all in and paid for.

The remarkable convenience - and the beautiful setting - make The Highlands ideal for family living!